

Name: _____ Date: _____ Class: _____

South Carolina: Our History, Our Home

Chapter 1: This is Our Home ~ Internet Activity

In this lesson, you will explore websites to learn the location of your state and community using **absolute** and **relative location**. You will also check out information related to the climate of South Carolina.

Instructions: Click the links below and use the information from the websites to complete each item.

Part I: Location

Click here: <https://goo.gl/maps/4yuZ2JQyTfMwdHz59>. Use this link to find **relative locations**.

1. What states and/or bodies of water border South Carolina? Use the + and - buttons to zoom in and out, as needed.

2. Write a short paragraph to describe the location of South Carolina relative to places along its borders.

Click for a Map of South Carolina Counties: <https://www.sciway.net/maps/cnty/>.

3. Find your county on the map. Write a sentence that expresses its location relative to another county. For example: *Wirt County is south of Wood County.*

4. List the South Carolina counties that border your county.

You have described one location as it relates to another; that's **relative location**.

Name: _____ Date: _____ Class: _____

South Carolina: Our History, Our Home

Chapter 1: This is Our Home ~ Internet Activity

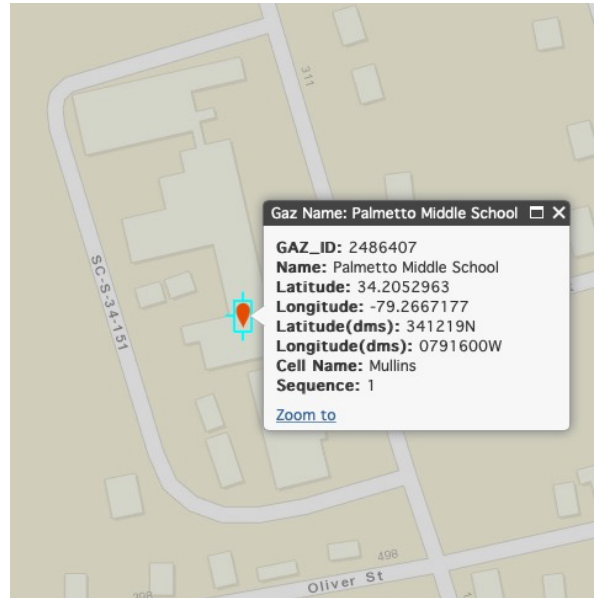
Let's find some **absolute locations**. Click: <https://geonames.usgs.gov/apex/f?p=gnispq>. Enter the name of your school in the Feature Name field. Enter the state and county. Click "Send Query."

Once your school is located, click its name. You will get additional information about your school's location.

Click "GNIS in ESRI Maps" on the right side of the screen.

After your map appears, click the location marker for your school and then click "Zoom to."

Latitude and longitude are given in decimal form and (dms) or degrees, minutes, seconds. For instance, in the example at right, the latitude is 34°12'19" N and longitude is 79°16'00" W.



- Record the latitude and longitude of your school and three other cultural features in your community or state.

Cultural Feature	Latitude (Degrees, Minutes, Seconds)	Longitude (Degrees, Minutes, Seconds)
Our school		

Absolute locations don't depend on knowing what's nearby. When using absolute location, you'll always have a number of degrees *north* or *south* of the **equator** and a number of degrees *east* or *west* of the **prime meridian** to pinpoint a location.

Name: _____ Date: _____ Class: _____

South Carolina: Our History, Our Home

Chapter 1: This is Our Home ~ Internet Activity

Part II: Climate

6. Click the link below. Then, click **South Carolina** on the map. You will see several weather stations. Click the station closest to where you live. Use information from the link to complete the following chart.

<http://www.esrl.noaa.gov/psd/data/usclimate/states.fast.html>

	<i>Weather Station Nearest My House: (list station)</i>	<i>Another South Carolina Weather Station: (list station)</i>
<i>Maximum Temperature (°F)</i>		
<i>Minimum Temperature (°F)</i>		
<i>Average Snowfall (in.)</i>		
<i>Average Rainfall (in.)</i>		
<i>Usual Coldest Month</i>		
<i>Usual Warmest Month</i>		

Finished Early? Relocate the map of your school. Use the buttons at the top of the map to explore the area using the various maps (Map, Imagery, Hybrid, USGS Topo). Can you find the area around where you live using these maps?

Consider these questions: How do these maps differ? How might people use these maps? What advantage does one map have over another?